

State of Wyoming Corner Record

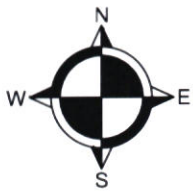
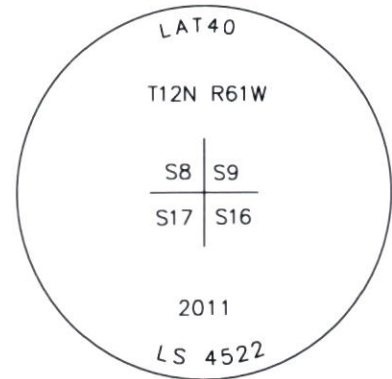
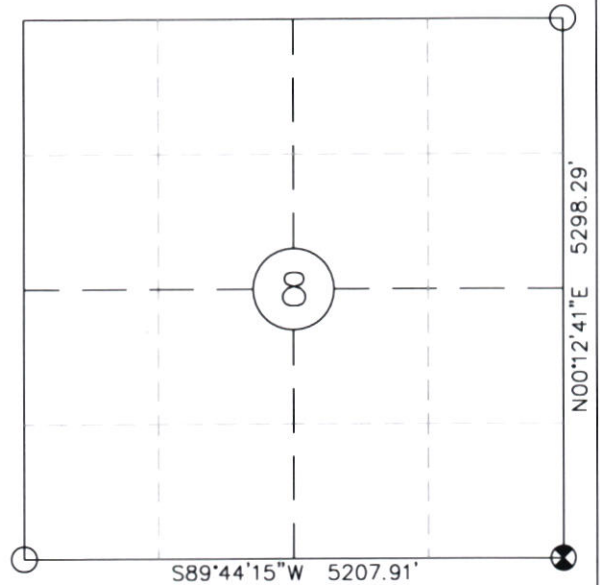
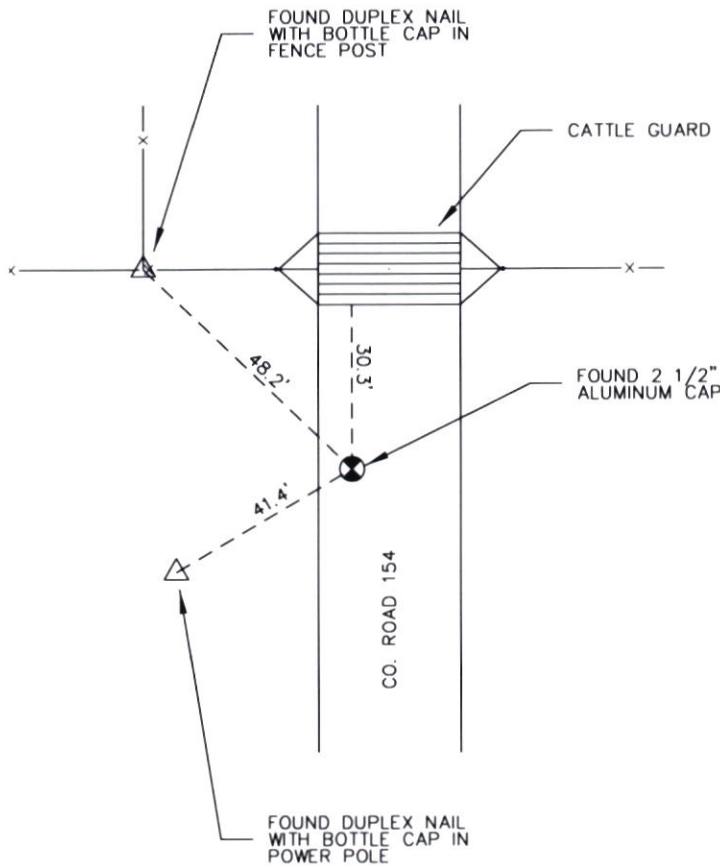
(In compliance with the CORNER PERPETUATION AND FILING ACT, Wyoming Statutes, 2013 Section 33-29-901 through 33-29-910, and the Rules and Regulations of the Board of Professional Engineers and Professional Land Surveyors)

Reverse side of this form may be used if more space is needed.

Record of original survey and citation of source of historical information (if corner is lost or obliterated). Description of corner monumentation evidence found and/or monument and accessories established to perpetuate the location of this corner. Sketch of relative location of monument, accessories, and reference points with course and distance to adjacent corner(s) (if determined in this survey). Method and rationale for reestablishment of lost or obliterated corner.

FOUND: 2 1/2" Aluminum Cap
 SET: Nothing
 REFERENCES: Found as shown

Monument location



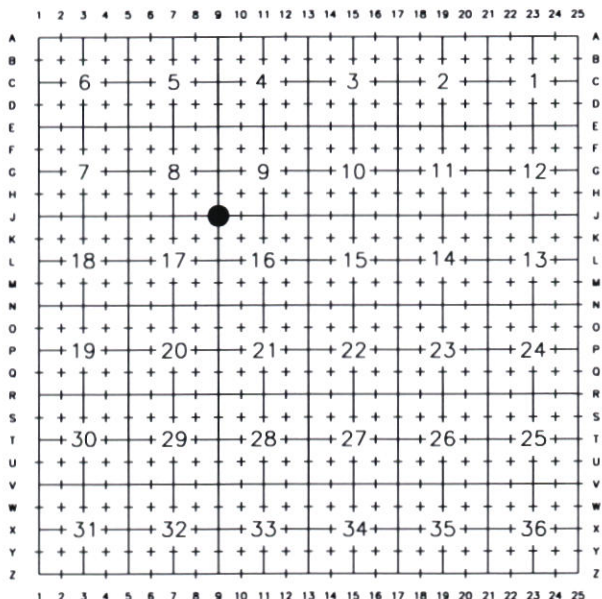
LEGEND

- ⊗ SECTION CORNER
- △ REFERENCE
- RELATED CORNER MONUMENT

Date of Field Work: 07/27/2021

Office Reference: 120-1866-00

Cross Index Plat



Firm/Agency, Address

GARY N. GRIGSBY
 Y2 CONSULTANTS
 1725 CAREY AVE
 CHEYENNE, WY 82001
 (307) 632-5656

This corner record was prepared by me or under my direction and supervision.

SEAL & SIGNATURE



Corner Name Section Corner Section 8 | 9 / 17 | 16, T 12 N, R 61 W, 6th P.M.

Cross-Index No.: J-9

WBPEPLS/PLSW: March 1994; PLSW January 1998, January 2019

County: LARAMIE



RECP #: 851774

RECORDED 2/13/2023 AT 2:52 PM BK# 2823 PG# 612
 Debra K. Lee, CLERK OF LARAMIE COUNTY, WY PAGE 1 OF 7